

Violin

# SO WHAT

(approach on 4th degree of scale)

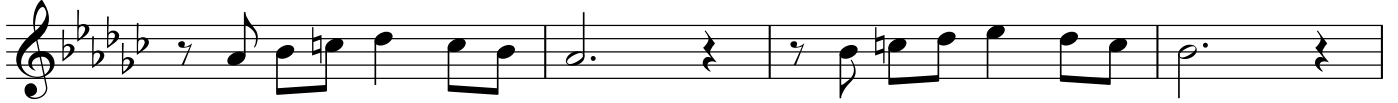
MARCUS PRINTUP

Musical notation for the first part of the piece. It consists of two measures of music on a treble clef staff. The first measure is labeled with a  $Dm^7$  chord and is described as the "G scale w/ flat7th". The second measure is labeled with an  $Ebm^7$  chord and is described as the "Ab scale w/ flat7th". The notation shows a sequence of eighth notes in the first measure and a sequence of eighth notes with flats in the second measure.

## MARCUS PRINTUP SOLO

Musical notation for the Marcus Printup solo, consisting of four lines of music on a treble clef staff. The first line starts at measure 5 and ends at measure 9, with a  $Dm^7$  chord indicated above the staff. The second line starts at measure 10 and ends at measure 14, also with a  $Dm^7$  chord indicated above the staff. The third line starts at measure 15 and ends at measure 17. The fourth line starts at measure 18 and ends at measure 19, featuring a triplet of eighth notes. The solo is written in a key signature of one flat (B-flat).

21 Ebm7



25



29 Dm7



33



37 Dm7



41



45 Dm7



49



53 Ebm7



57



61 Dm<sup>7</sup>

3

66

69